

# GALA FAQ's

## *Eastern Elegance*

### **When and where is the gala?**

The gala is being held on February 7, 2026, at Higgins Hall.

### **What time does the event begin?**

There is a 6:00-6:30pm "Principal's Reception" that is by special invitation only. Main doors open at 6:30. Cocktail hour is from 6:30-7:30; dinner service will begin at 7:30, and our program begins at 8:00. Dessert and dancing follow the program from 9:00-11:00pm.

### **What is the dress code for the evening?**

Please wear culturally respectful traditional attire or evening formalwear. We will be celebrating China, Japan, Korea, and Vietnam with the menu, but representing any of the beautiful Asian cultures in garments is welcomed.

### **What is the "gala?"**

The St. Lawrence School Gala, hosted by the Parents' Club, is the most fun evening where our community celebrates together and donates towards school projects. This year our theme is "Eastern Elegance" ~ an exciting evening of Asian fusion with a food street market, family style dinner, entertainment, a fundraising program, and dancing! We will raise funds to establish a long-term investment fund dedicated to helping St. Lawrence meet the needs of both today's students and future generations.

### **Is it important to attend the gala?**

Yes, of course! It's always wonderful to celebrate as a community the mission of the school and to fundraise for much needed campus improvements. We ARE *Familia*, we ARE St. Lawrence, and we can make great things happen when we work together. YOUR participation is vital!



## Can I support the gala and not attend?

Absolutely! You can either send in a check or donate online through Qtego:

<https://qtego.us/qlink/slcs>

You can also support the gala by donating gift certificates, experiences, and items for the auction. Checks should be made out to “*Parents’ Club*,” add “*Gala*” to the memo line, and place in an envelope marked “*attn. to Bianca Brink and/or Loren Lopez*.” They can also be mailed to the school or dropped off to Jeanie Armstrong in the school office. Please mail to: *St. Lawrence Catholic School, Attn: Bianca Brink/Loren Lopez, 5223 N. Himes Ave., Tampa, FL 33614*

## Is there a website to access event updates?

Check our gala website for updates: <https://stlawrencecatholicschool.org/gala2026/> and our Qtego website for donations and ticket information: <https://qtego.us/qlink/slcs>.

## Can I pay for a ticket the evening of the event?

Unfortunately, no as our vendors need to have a guest count in advance. All tickets must be purchased in advance and before the event’s closing date of 1/23/26 or before we sell out.

## Can I purchase a table without knowing the names of my guests?

Yes, you can purchase a table and take your time in choosing your guests. Once you have your guest list, please send those names to Bianca or Loren so they can update the seating chart. Guest lists should be turned in before 1/23/26, but accommodations can be made for late entries. Please let your guests know that they must register with Qtego, our online event platform, to participate in the auction or raffles. There is advance registration, or guests can register upon arrival at gala.

## How many seats are at each table?


There are eight seats per table.

## Will I receive my tickets in the mail?

No, we do not issue physical tickets. You simply check in upon arrival.

## If one of my guests is unable to attend, can I invite someone else at the last minute?

Yes, you can invite someone other than your original guest. Please let registration know there has been a change. Your new guest will need to register in Qtego so they can be assigned a bidder number to use during the auction/raffles throughout the evening.



## What forms of payment do you accept?

For sponsorship and ticket sales, you may pay by check or credit card. We are already collecting checks for sponsorships. Check is preferred as there is no credit card fee. Checks will be collected and given to our Parents' Club Treasurer for deposit. When paying by credit card, there is an "opt in" option to cover the service charge. This greatly helps the school fundraiser and is appreciated so we don't have to pay the fee out of our event profits. No cash please!

## Can I register my Credit Card to use the evening of the event?

You can safely pay for your sponsorship, make a donation, and register on Qtego, our online platform. Please visit: <https://qtego.us/qlink/slcs>.

Paying with a credit card does not register you as a guest; those are two separate prompts on Qtego. Once you are registered, you will begin to receive text messages with event information and assigned a bidder number. Please visit registration on gala night to collect your bid paddles and bidder number to participate in the raffles and auction.

## How do I bid on items?

You first must register by visiting our Qtego website. Once we have the raffles and auction items posted, you will be able to view them from Qtego. When those options open, you can start bidding. You will receive a text alert to let you know if you have been outbid or to remind you when the auction is about to end. If you are interested in bidding on items in the LIVE auction, then you will receive a paddle at the registration table on gala night. There will be a licensed auctioneer managing the live auction at the gala. Winning an auction does not constitute an agreement, implied or otherwise, for any additional services on behalf of St. Lawrence Parish or School.

## When can I collect my items if I win something?

Most items can be collected on gala night after the raffles and auctions are closed. If you cannot take your item(s) home on gala night, please plan with check-out for a pickup time. If for some reason the items are not available to give to you upon purchasing, our gala chairs will arrange with you for delivery or pick up. Usually on Monday following the gala, you can pick up items after school drop off.

## Any other information I should know?

Plan on having an AMAZING time raising money for an AMAZING school! Our students deserve it!



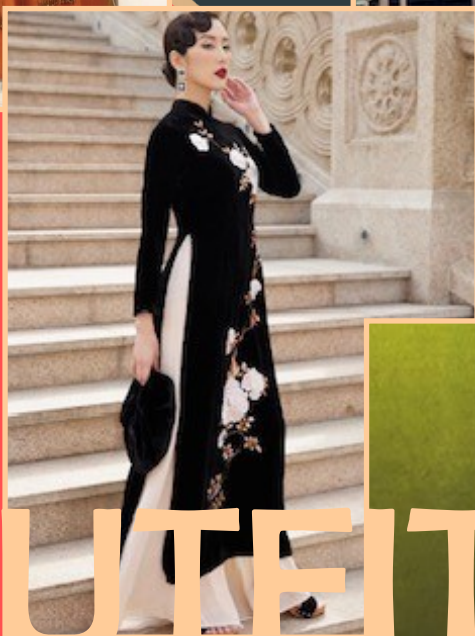
*Gala Chairs*

**Bianca Brink ~ [bbrink@stlawrence.org](mailto:bbrink@stlawrence.org)**

**Loren Lopez ~ [loren@eventingtampabay.com](mailto:loren@eventingtampabay.com)**







# OUTFIT Inspirations